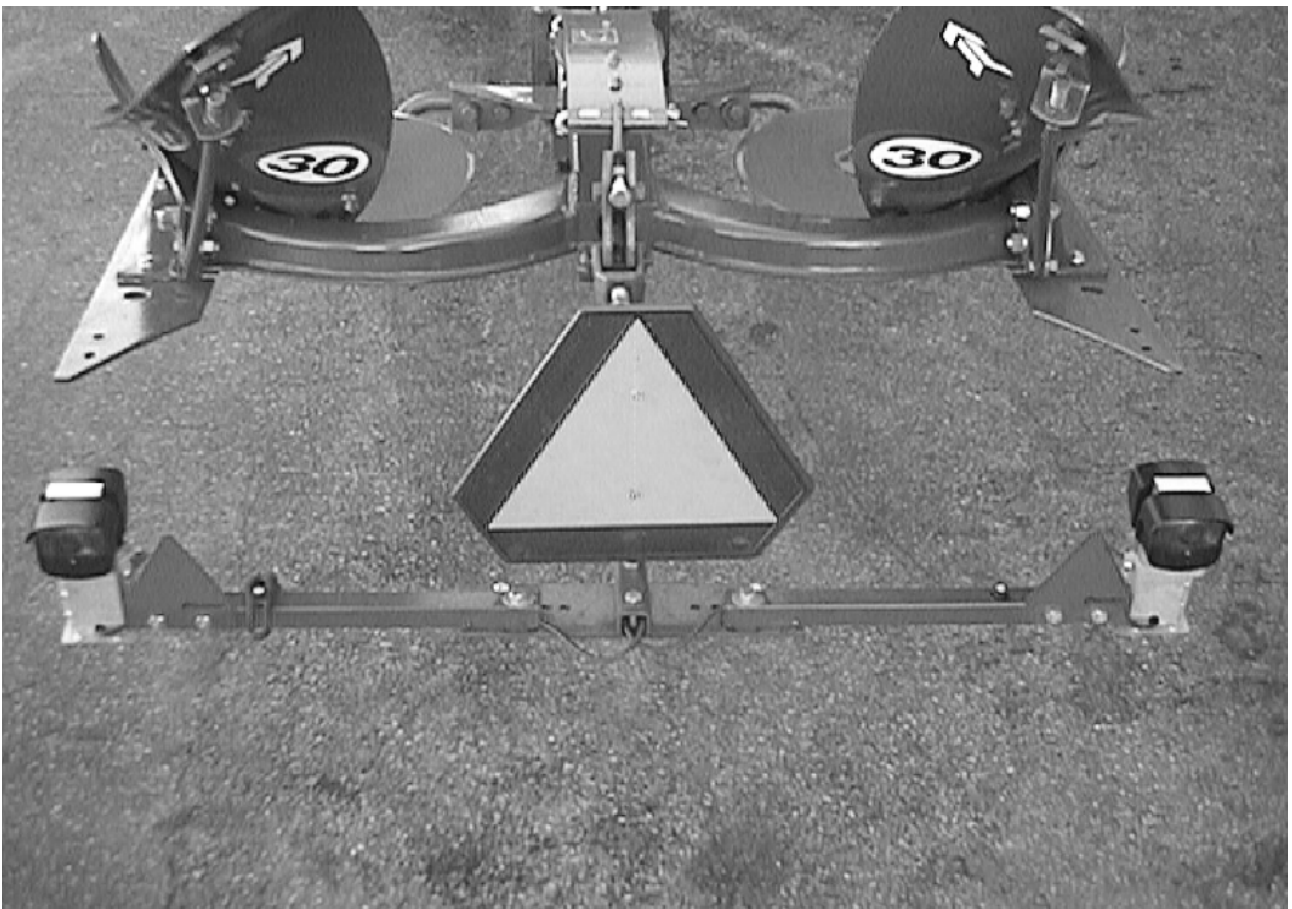


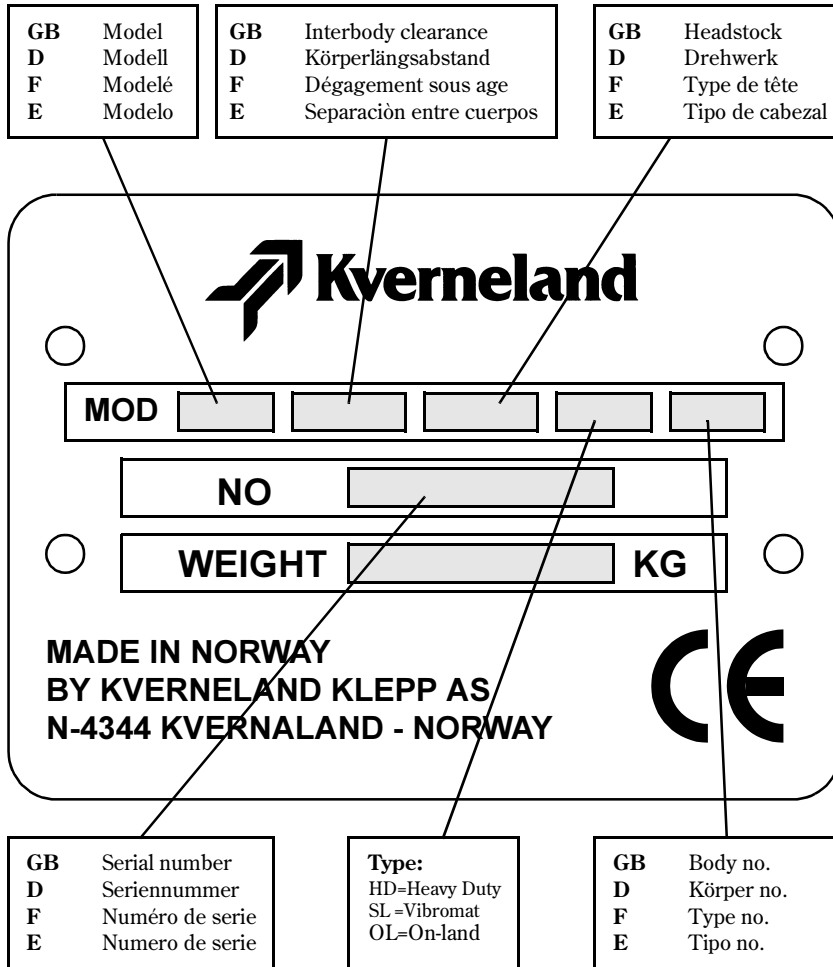
Spare Parts List

Light equipment - all ploughs

No 733030



Notes

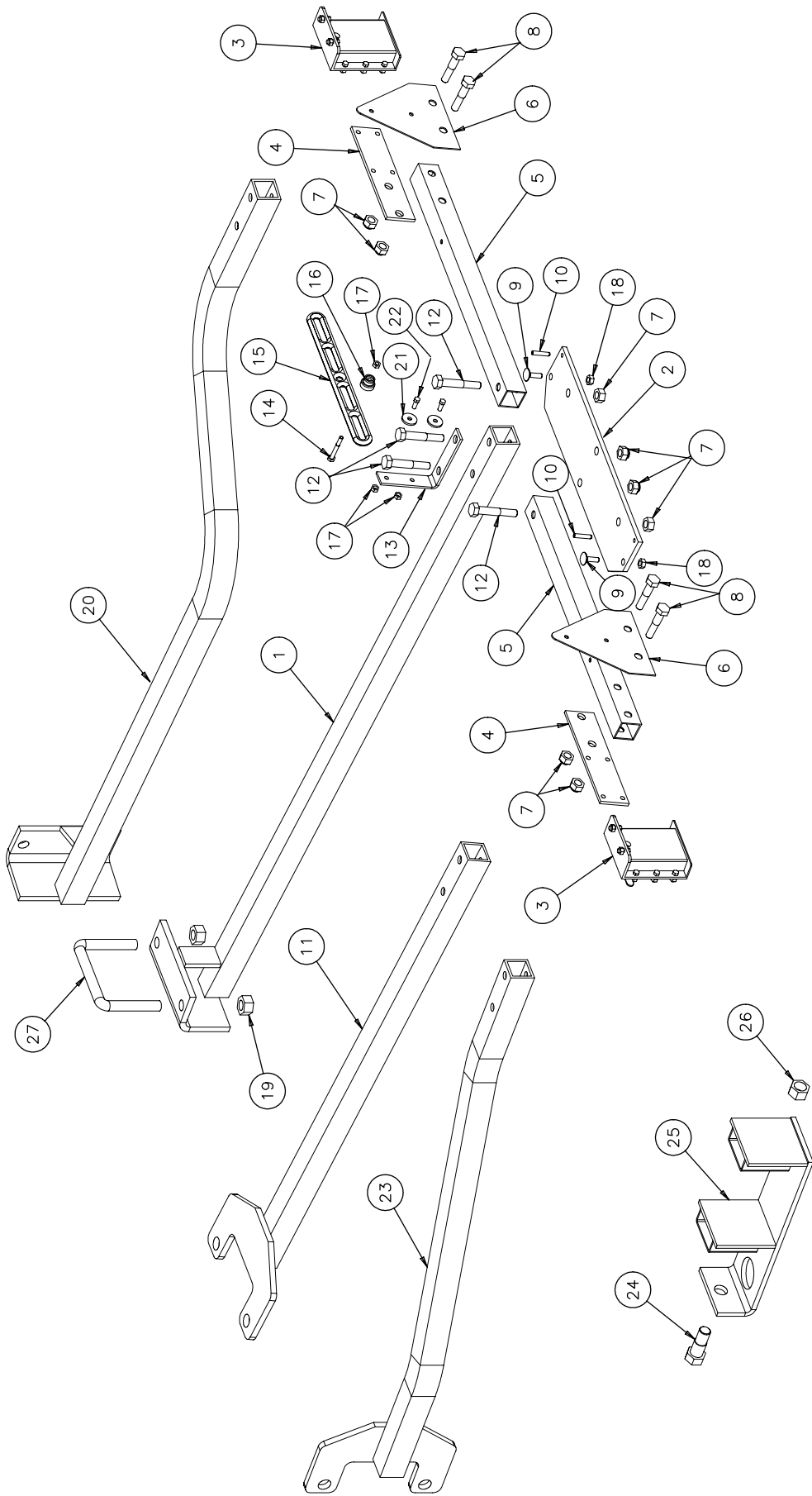


- (GB)** Complete model code and serial number must be stated to avoid mistakes when ordering spare parts and misunderstandings regarding service consultations. The identification plate is located on the headstock.
- (F)** Le code complet et le numéro de série doivent être indiqués pour éviter des erreurs lors de la commande de pièces de rechange et des malentendus concernant des demandes de Service-Après-Vente. La plaque d'identité est située sur la tête.
- (D)** Um bei Ersatzteilbestellungen und Serviceleistungen Fehler und Mißverständnisse zu vermeiden ist es erforderlich, daß die genaue Bezeichnung und die Seriennummer angegeben werden. Die Plakette befindet sich am Drehwerk.
- (E)** Debe figura el código completo del modelo y el número de serie para evitar errores al pedir las piezas de recambio y al hacer consultas técnicas. La placa de identificación esta situada en el cabezal.

Contents



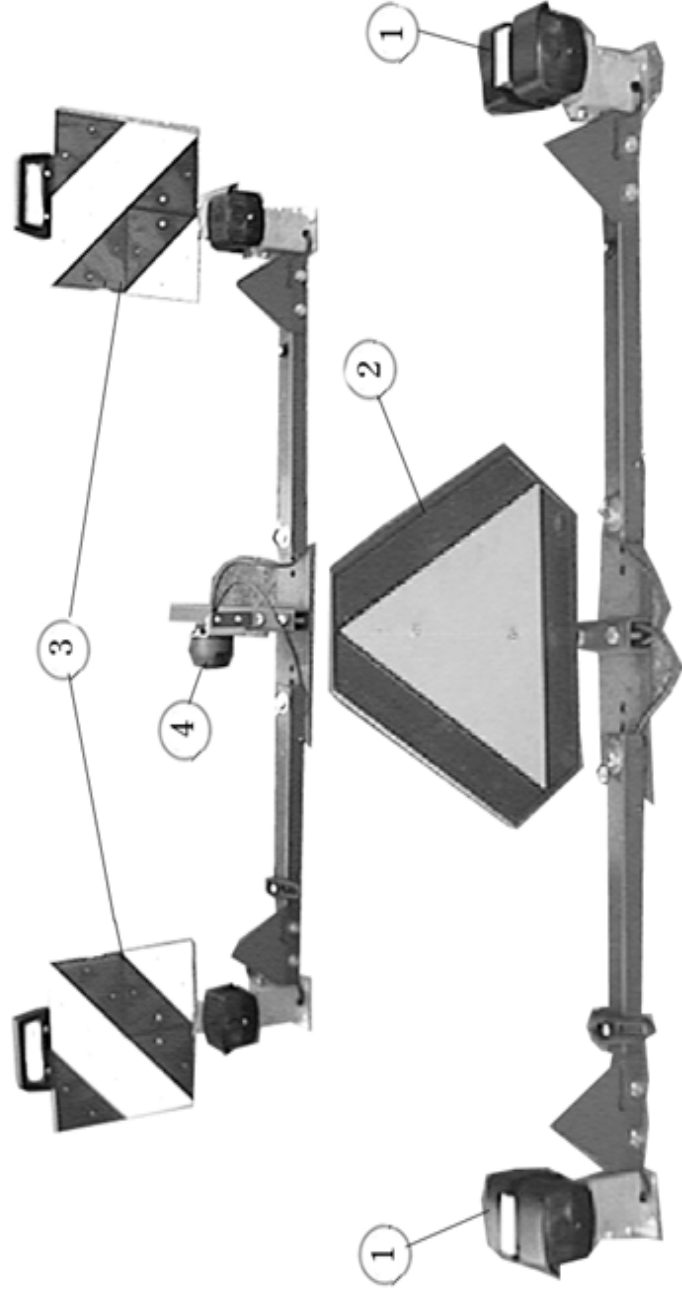
Plate		Page
1082	Light equipment mounted.....	4
1087	Lights and reflexes.....	6
1085	Side light mounted.....	8
	Index.....	10



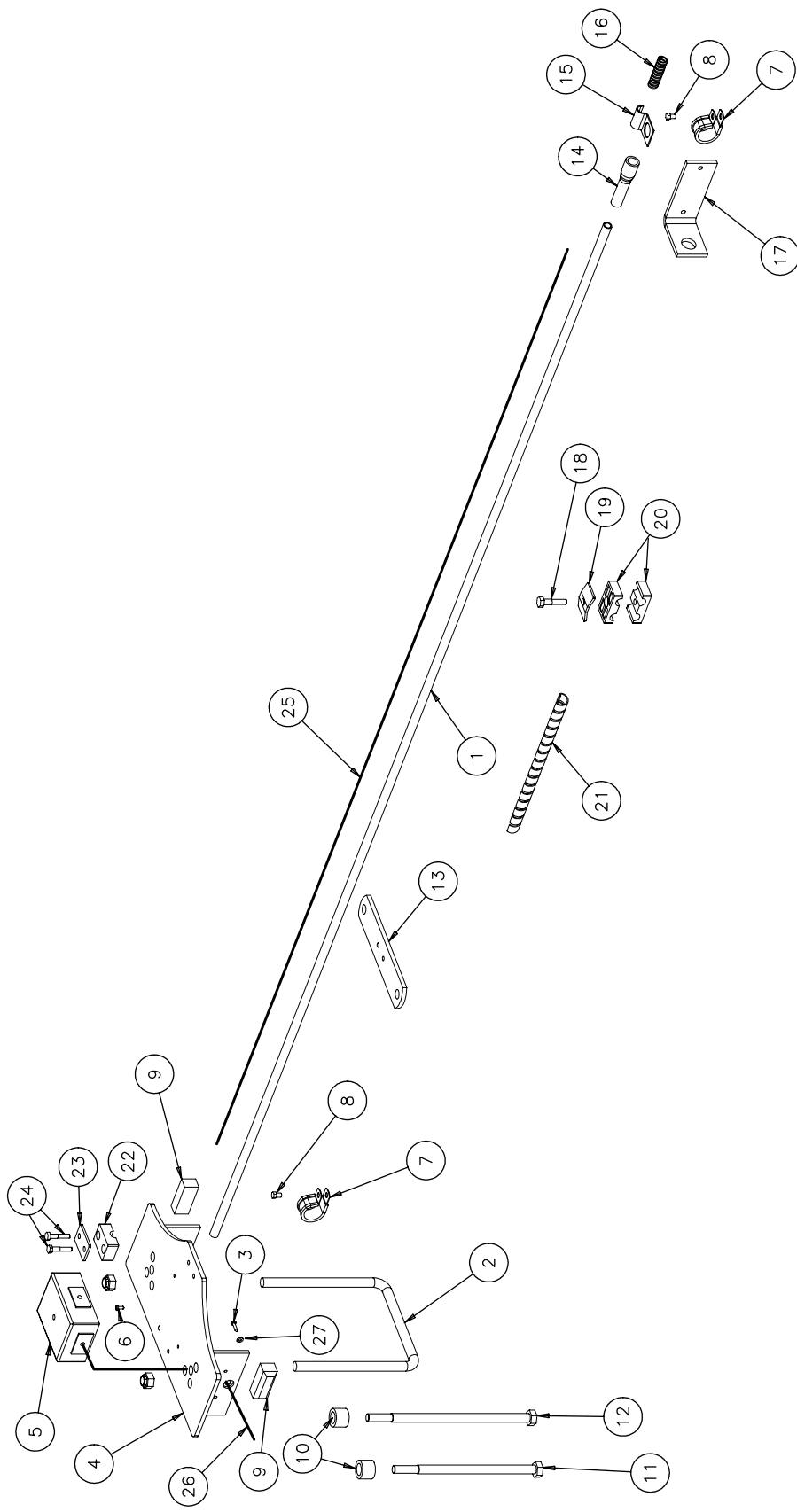
1082 Light equipment mounted



1	KK 35 40 02	Bracket for light equipment, rear (transported in half turned)
2	KK 35 40 06	Plate
3	UH 44 07 78	Plug box, rear, R.
	UH 44 07 79	Plug box, rear, L
4	KK 35 40 08	Plate for plug box
5	KK 35 40 07	Side tube (transported in plough position)
6	KK 35 40 11	Reflex holder
7	KK 01 60 08	Lock nut M12
8	KK 03 26 55	Hex screw M12 x 55 mm
9	KK 03 45 20	Lock screw M8 x 20 mm
10	KK 01 10 12	Roll pin D6 x 30 mm
11	KK 35 40 65	Bracket for light equipment (for RX and RS ploughs) (transported in half turned)
12	KK 03 26 70	Hex screw M12 x 70 mm
13	KK 35 40 10	Bracket, rear for triangle
14	KK 03 23 50	Hex screw M6 x 50 mm
15	KK 35 40 26	Rubber band
16	KK 35 40 27	Attachment knob
17	KK 01 58 06	Nut M6
18	KK 01 58 11	Nut M8
19	KK 01 58 25	Nut M16
20	KK 35 40 43	Bracket for light equipment (for EG, E/F, ES, ED and E ploughs) (transported in plough position)
21	KK 01 29 04	Washer
22	KK 03 33 15	Hex screw M6 x 15 mm w/nut
23	KK 35 40 75	Bracket for light equipment (for LB, LD, LS and VD ploughs) (transported in plough position)
24	KK 03 28 50	Hex screw M20 x 50 mm w/nut
25	KK 35 40 21	Bracket for parking light
26	KK 01 58 30	Nut M20
27	KK 06 61 75	U-bolt
	Not ill.	KK 01 28 70 Belleville spring



1	KK 35 40 59	Double light, rear, L and R (for Denmark)
2	KK 35 40 40	Reflex, triangle
3	UH 41 42 16	Double light, rear w/2 reflex plates, R (for Germany)
	UH 41 42 17	Double light, rear w/2 reflex plates, L (for Germany)
4	UH 44 07 80	Contact
Not ill.	KK 35 40 64	Cable w/2 adapters, 8 m
	KK 35 40 63	Cable w/2 adapters, 13 m
	UH 44 07 75	Cable w/2 adapters, 4 m
	KK 70 99 82	Sticker reflex, white
	KK 70 99 80	Sticker reflecting triangle, red



1085 Side light mounted

1	KK 01 27 18	Oil tube D12 x 1800 mm			KK 35 40 78	Cable 10 m
	KK 01 27 19	Oil tube D12 x 900 mm		26	KK 35 40 62	Cable
	KK 07 73 98	Oil tube D12 x 1450 mm		27	KK 01 28 52	Washer
	KK 06 86 90	Oil tube D12 x 1950 mm				
	KK 06 86 91	Oil tube D12 x 2800 mm				
2	KK 35 40 17	U-bolt (for tube 150 x 150 mm)		Not ill.	UH 44 07 80	Contact
	KK 35 40 18	U-bolt (for tube 180 x 180 mm)				
	KK 07 14 92	U-bolt (for tube 120 x 200 mm)				
	KK 07 14 93	U-bolt (for tube 200 x 200 mm)				
3	KK 03 10 18	Posidrive M3.5 x 16 mm				
4	KK 35 40 14	Bracket for side light				
5	UH 33 37 91	Coupling box				
6	KK 03 10 08	Machine screw M4 x 16 mm				
7	KK 01 27 37	Hose clamb				
8	KK 03 33 06	Hex screw M6 x 8 mm				
9	UH 41 42 15	Side light				
10	KK 07 43 19	Bushing				
11	KK 03 26 24	Hex screw M12 x 210 mm w/nut				
12	KK 03 26 23	Hex screw M12 x 240 mm w/nut				
13	KK 35 40 29	Plate (for tube 150 x 150 mm)				
	KK 35 40 28	Plate (for tube 180 x 180 mm)				
	KK 35 40 30	Plate (for tube 200 x 200 mm)				
14	KK 35 40 42	Connection tube/electro flex				
15	KK 01 27 00	Clamp				
16	KK 35 40 41	Electro flex				
17	KK 06 19 41	Connection angle				
18	KK 03 24 35	Hex screw M8 x 35 mm w/nut (for PL plough only)				
19	KK 01 23 24	Cover (for PL plough only)				
20	KK 01 23 23	Plastic part (for PL plough only)				
21	KK 01 15 96	Hose band (for PG plough only)				
22	KK 01 20 92	Plastic part				
23	KK 01 20 69	Cover				
24	KK 03 23 30	Hex screw M6 x 30 mm w/nut				
25	UH 33 37 90	Cable 9.5 m				
	KK 35 40 77	Cable 8 m				

